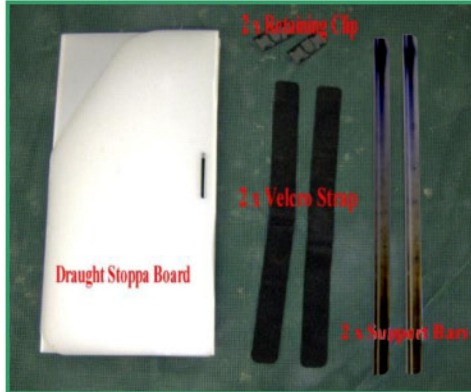


Twin Axle '**DRAUGHT STOPPA**' Fitting Instructions



1. Component parts



2. Hold the Velcro strap around the highest spoke in the wheel



3. Position the board centrally so the straps can be located through the slots that align best



4. Secure the straps so as to flatten the folds and leave the board flush against the vehicle body



5. Thread the support bar on to the skirt



6. Position the retaining clip over the Velcro strap (2 - Positions)



7. Clip the support bar in to the retaining clip by first locating the bottom lip of the bar (2 - Positions)



8. Installation complete, removal is a reversal of these fitting instructions

NOTE - Due to the variation in twin axle geometry, it may be necessary to trim excess board to attain a correct fit